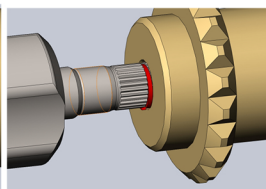
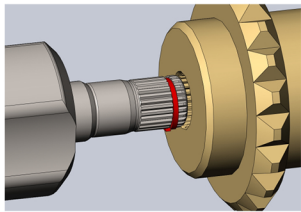
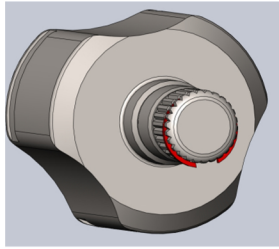


INSTALLATION INSTRUCTIONS

CV Axle Inboard Joint Circlip



ATTN: PROPER POSITIONING OF CIRCLIP IS RECOMMENDED WHEN INSTALLING A CV AXLE. IMPROPER INSTALLATION OF CIRCLIP CAN CAUSE DAMAGE TO RELATED VEHICLE AND ANY RELATED COMPONENTS.



1. Remove axle from packaging. Compare to the original axle to confirm it is the correct part.
2. Locate the included circlip on axle splines.
3. It is important the open mouth on circlip is facing downwards as circlip will not engage if the open mouth is upwards.
4. Once the circlip mouth is positioned downwards, slide the IJB stem into the differential.

*It is recommended that you apply a small amount of grease on the inner splines to ease installation.
5. Carefully insert the inboard joint splines into differential. You will notice the oriented angular contact between the IJB circlip and the differential.
6. Maintain the oriented angular contact and with slight force slide the IJB completely into the differential. You will notice a click noise as the circlip engages.

IMPROPER POSITION OF CIRCLIP

